

Grover's algorithm

Ashley Montanaro

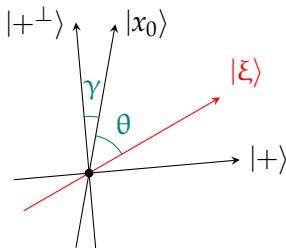
School of Mathematics, University of Bristol
Bristol, UK

1 February 2017

Grover's algorithm alternates the operations $R_{|x_0\rangle}$ and $R_{|+\perp\rangle}$, where $|+\perp\rangle$ is a state orthogonal to $|+\rangle$ in the 2d space $\text{span}\{|x_0\rangle, |+\rangle\}$.

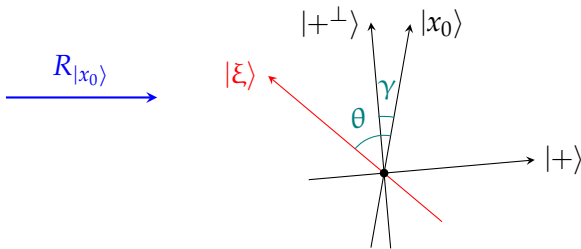
Grover's algorithm alternates the operations $R_{|x_0\rangle}$ and $R_{|+\perp\rangle}$, where $|+\perp\rangle$ is a state orthogonal to $|+\rangle$ in the 2d space $\text{span}\{|x_0\rangle, |+\rangle\}$.

The composition of two reflections is a rotation:



Grover's algorithm alternates the operations $R_{|x_0\rangle}$ and $R_{|+\perp\rangle}$, where $|+\perp\rangle$ is a state orthogonal to $|+\rangle$ in the 2d space $\text{span}\{|x_0\rangle, |+\rangle\}$.

The composition of two reflections is a rotation:



Grover's algorithm alternates the operations $R_{|x_0\rangle}$ and $R_{|+\perp\rangle}$, where $|+\perp\rangle$ is a state orthogonal to $|+\rangle$ in the 2d space $\text{span}\{|x_0\rangle, |+\rangle\}$.

The composition of two reflections is a rotation:

